



**UNITED STATES DEPARTMENT OF AGRICULTURE
FOREST SERVICE
LINCOLN NATIONAL FOREST
SACRAMENTO RANGER DISTRICT**

**SPECIAL CLOSURE FOR
PROTECTION OF HUMAN HEALTH AND SAFETY WITHIN
THE MONUMENT FIRE AFFECTED AREA**

Pursuant to 16 USC 551 and Title 36 CFR 261.50(a) and (b), the following acts are prohibited within the areas affected by the Monument Fire as described in this Order (the “restricted area”) and as depicted on the attached map, hereby incorporated into this Order as Exhibit A, within the Sacramento Ranger District, Lincoln National Forest, Otero County within the State of New Mexico.

PROHIBITIONS:

It is prohibited to go into or be upon any area which is closed for the protection of public health and safety. **36 CFR 261.53(e)**

EXEMPTIONS:

Pursuant to 36 CFR 261.50(e), the following persons are exempt:

1. Persons with a permit specifically authorizing the otherwise prohibited act or omission.
2. Any Federal, State or local officer, or member of an organized rescue or firefighting force engaged in the performance of an official duty.

RESTRICTED AREA:

The restricted area encompasses the area affected by the Monument Fire within the following areas: T. 18 S., R. 12 E. Sec. 25-27; 34-36; T. 18 S., R. 13 E. Sec. 20, 21, 28-33; T. 19 S., R. 12 E. Sec. 1; T. 19 S., R. 13 E. Sec. 5-8 (shown on the attached map). All authorized roads and trails within the restricted area boundary are closed as part of this order. Roads included in the closure are: 438 (Roger’s Ruins), 254 (Board Canyon), 255 (Jim Lewis), and 5600 (Monument Canyon). Trails included in the closure order are: T123 (Monument Canyon Trail). Portions of the roads and trails that are outside of the restricted area will remain open.

PURPOSE:

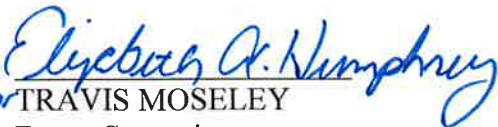
This order is being implemented for the protection of public health and safety. The Monument Fire started on June 2, 2017 and poses threats to human health and safety due to the hazards

associated with a wildfire. The order will allow for protection of fire personnel and the public within the area affected by the Monument Fire on the Sacramento Ranger District.

IMPLEMENTATION:

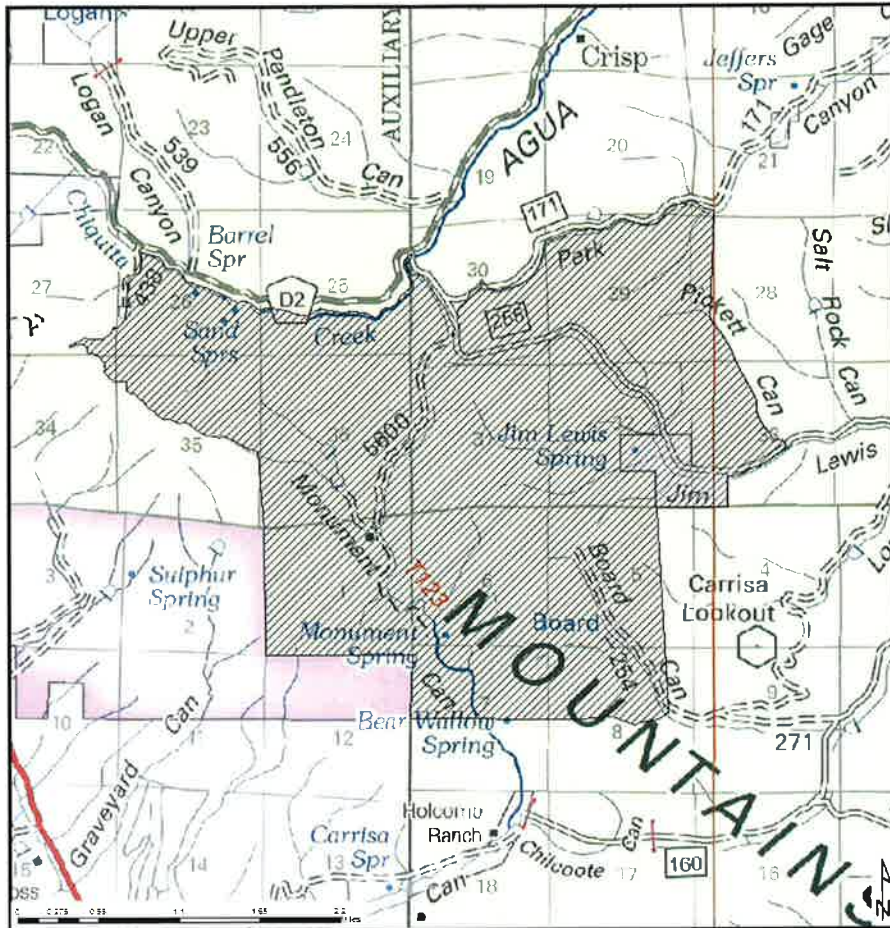
1. This Order will be effective immediately and shall remain in effect until the Monument Fire no longer poses a threat to human health and safety.
2. Any violation of these prohibitions is punishable as a Class B misdemeanor by a fine of not more than \$5,000.00 for individuals and \$10,000.00 for organizations or by imprisonment for not more than six (6) months, or both. [Title 16 USC 551, Title 18 USC 3571(b)(6), Title 18 USC 3581 (b)(7)].
3. This order supersedes, rescinds, and replaces any previous orders prohibiting the same acts covered by this order.

Done at Alamogordo, New Mexico, this 3rd day of June, 2017.

Acting for 
TRAVIS MOSELEY
Forest Supervisor
Lincoln National Forest

SPECIAL CLOSURE FOR PROTECTION OF HUMAN HEALTH AND SAFETY WITHIN THE MONUMENT FIRE AFFECTED AREA

EXHIBIT A



Lincoln National Forest
Sacramento
Ranger District

Monument Fire Closure Area
Closure Order 08-283

District
Vicinity Map

Legend

- Monument Fire Closure Area
- FS_OWN_CODE
- USFS

USDA